

Industrial Inkjet Coding Printer

Installation Manual

(IP 66 Water and Dust Proof)



This instruction manual is applicable to the installation of the 0.5 inch and 1 inch inkjet coding printers.

Industrial InkJet Coding Printer Packing List

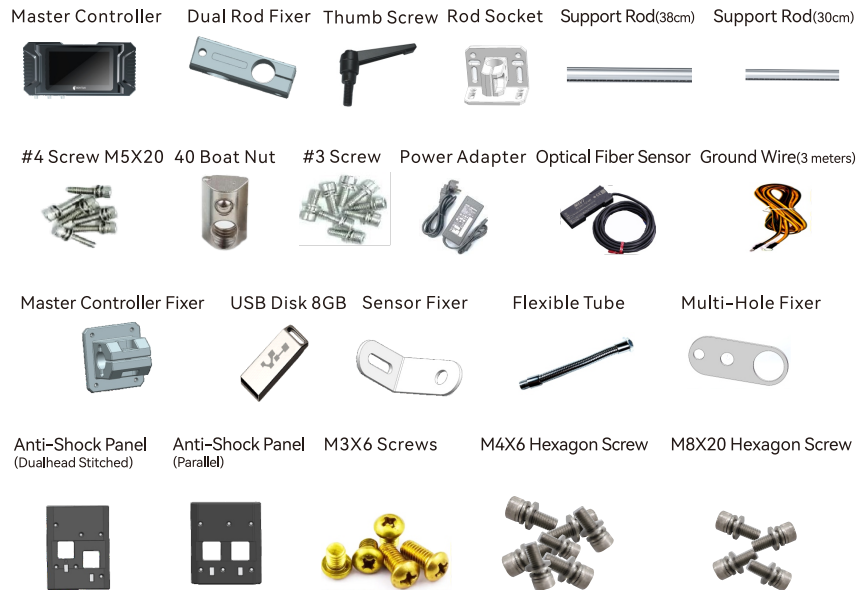
Packing List(Master Controller Box)

Serial	Name	Unit	Qty	Remarks
1	Master Controller	pc	1	M3X6 ground wire screws and M8X20 Pre-installed
2	96W Power Adapter	Set	1	Cable Included
3	#3 Screw	pc	6	
4	M8X20 Hexagon Screw	pc	2	Pre-installed
5	Master Controller Fixer	pc	1	Pre-installed with M8X20
6	Dual Rod Fixer	pc	2	With Label
7	40 Boat Nut	pc	2	Pre-installed
8	#4 Screw	pc	2	Pre-installed
9	Thumb Screw	pc	4	
10	Rod Socket	pc	1	Preinstalled with M8 screw, 40 boat nut and #4 screw
11	Support Rod(38cm)	pc	1	With Scale
12	Support Rod(30cm)	pc	2	Pre-installed
13	M3X6 Screw	pc	1	
14	Ground Wire(3 meters)	pc	1	
15	USB Disk 8GB	pc	1	
16	Flexible Tube	pc	1	Pre-installed
17	Anti-Shock Panel(Dualhead Stitched)	pc	1	
18	Anti-Shock Panel(Parallel)	pc	1	
19	Sensor Fixer	pc	1	
20	Multi-Hole Fixer	pc	1	
21	Optical Fiber Sensor	pc	1	
22	M4X6 Hexagon Screw	pc	1	Pre-installed

Packing List(Printhead Box)

Serial	Name	Unit	Qty	Remarks
1	Printhead Module	pc	1	Pre-installed with single head anti-shocking panel, black screw and ground wire screw
2	Printhead Fixer	pc	1	With Label
3	Dual Rod Fixer	pc	1	With Label
4	Rod Socket	pc	1	Preinstalled with M8 screw, 40 boat nut and #4 screw
5	Support Rod(38cm)	pc	1	With Scale
6	Support Rod(30cm)	pc	1	With Scale
7	Thumb Screw	pc	3	
8	M3X6 Screw	pc	2	Pre-installed
9	Printhead cable	pc	1	
10	Ground Wire(3 meters)	pc	1	
11	M4X16 Hexagon Screw	pc	2	
12	#3 Screw	pc	2	
13	M8X20 Hexagon Screw	pc	2	Pre-installed
14	40 Boat Nut	pc	2	Pre-installed
15	#4 Screw	pc	2	Pre-installed

Accessory List (Master Controller Box)



Accessory List(Printhead Box)



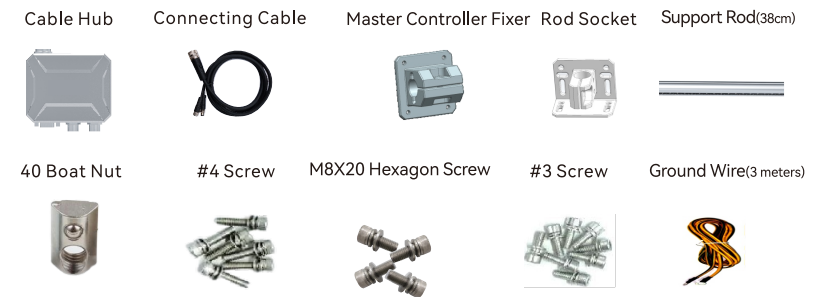
Packing List (Cable Hub Box)

Serial	Name	Unit	Qty	Remarks
1	Cable Hub	pc	1	Pre-installed with M3X6 ground wire screws
2	Connecting Cable	pc	1	RS232/485 + Beacon
3	Printhead Fixer	pc	1	With Label
4	Bracket Holder	pc	1	Preinstalled with M8 screw, 40 boat nut and #4 screw
5	Support Rod(38cm)	pc	1	With Label
6	#3 Screw	pc	6	
7	M8X20 Hexagon Screws	pc	2	Pre-installed
8	40 Boat Nut	pc	2	Pre-installed
9	#4 Screw	pc	2	Pre-installed
10	Ground Wire(3 meters)	pc	1	

Optional Accessory List

Serial	Name	Unit	Qty	Remarks
1	Sync Wheel			
2	Anti-Shocking Mechanism			
3	High- Precision Tuning Module			
4	Beacon			
5	Rotation Module			

Accessory List(Cable Hub box)

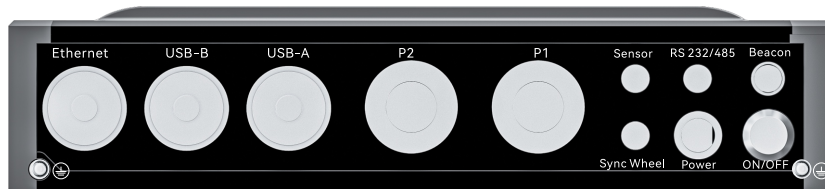
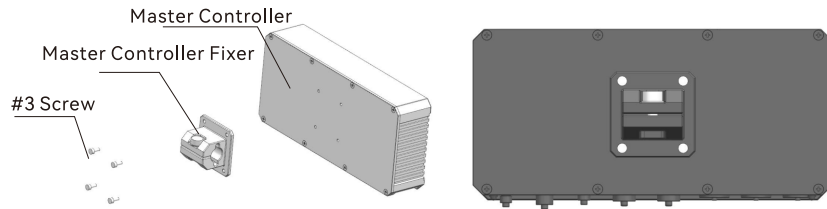


Optional Accessory List



Master Controller Assembling

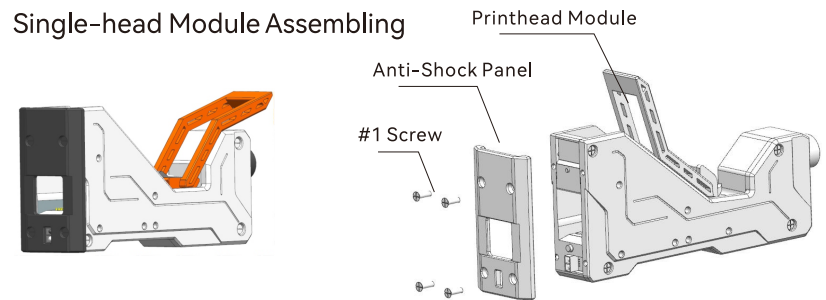
Master Controller



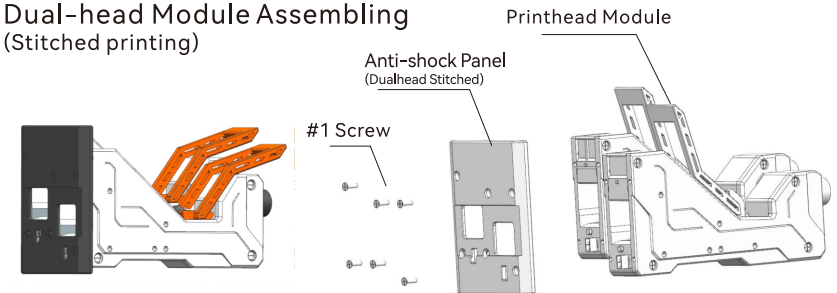
Ethernet	— Ethernet Port	RS 232/485	— Cable Hub Port (for RS232/485)
USB-B	— USB-B port	Beacon	— Cable Hub Port (For Beacon)
USB-A	— USB-A Port	Sync Wheel	— Sync Wheel Port
P2	— Printhead Cable Port	Power	— Power Port
P1	— Printhead Cable Port	ON/OFF	— Switch
Sensor	— Sensor Port	⏏	— Ground Wire Port

Printhead Assembling Diagram

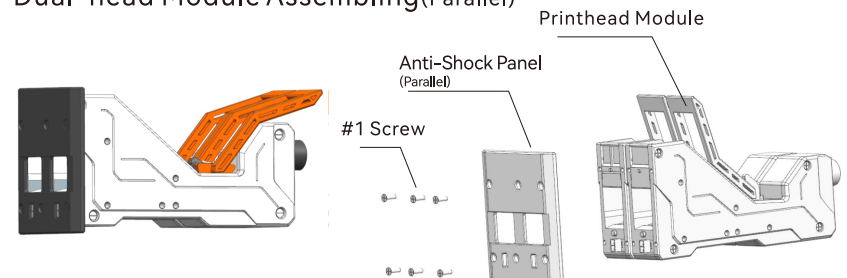
Single-head Module Assembling



Dual-head Module Assembling (Stitched printing)



Dual-head Module Assembling (Parallel)

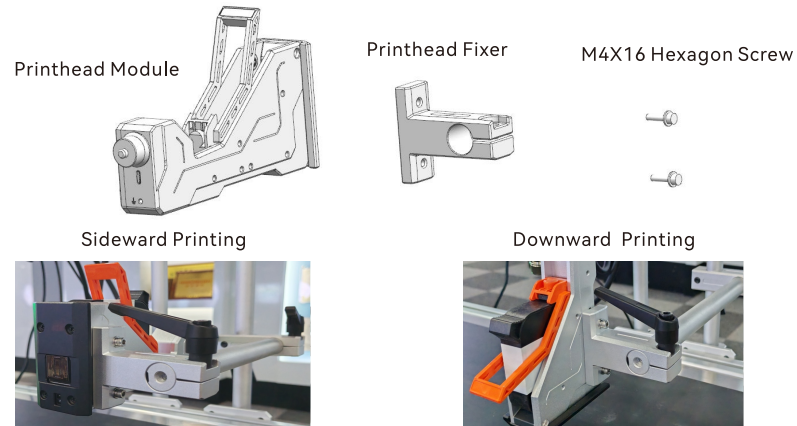


Note:

1. P1/P2 printhead numbers are marked on the anti-shocking panels, install it accordingly.
2. Replacing the printhead anti-shocking Panels could achieve different printhead combinations.

Printhead Module Assembling

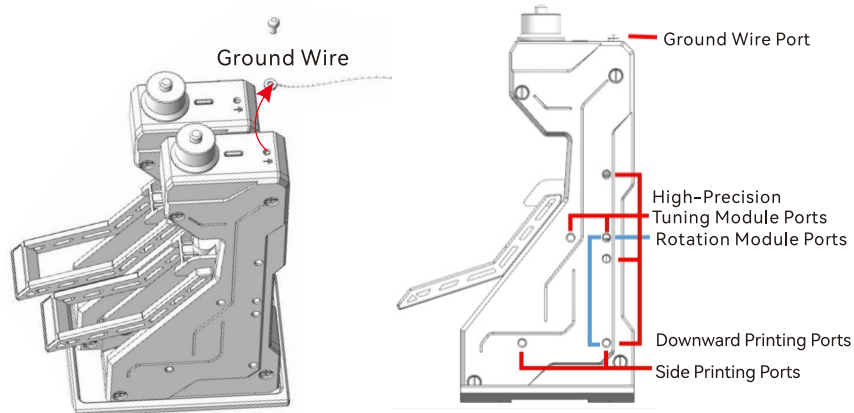
Printhead Fixer Assembling Guide



Note:

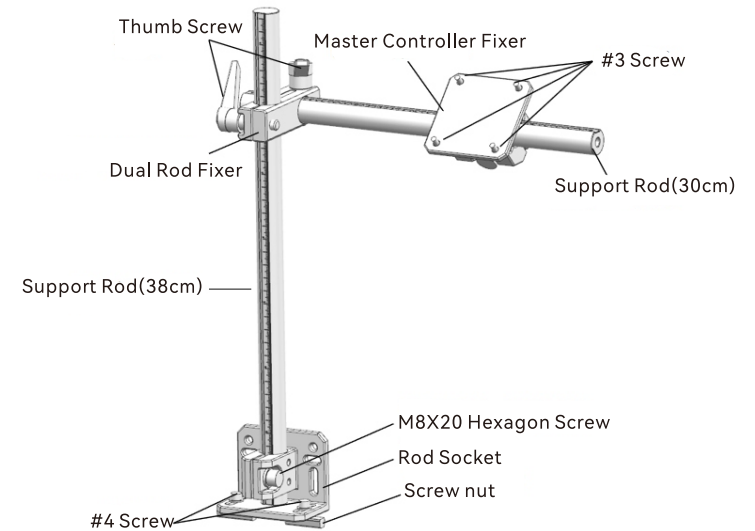
Downward printing or Side printing is optional when installing, using M4X16 hexagon socket screws to fix.

Printhead Ports Assembling Guide

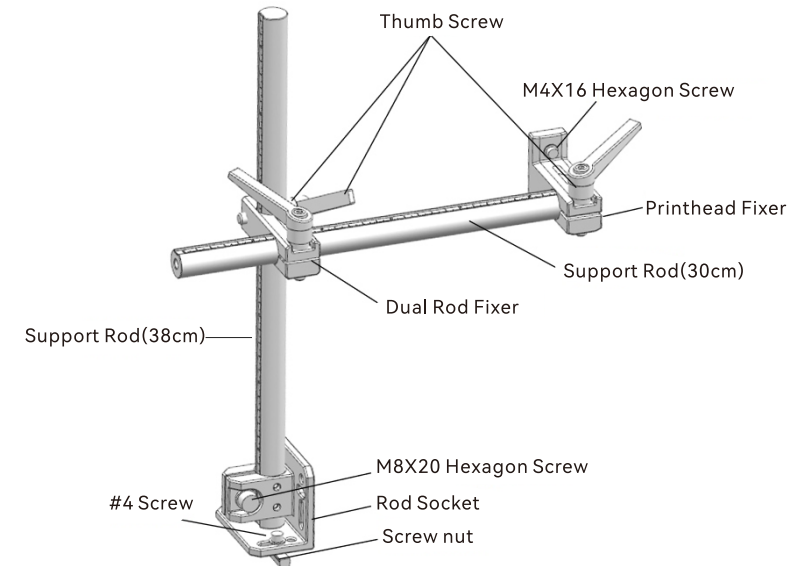


Bracket Assembling Guide

Master Controller Bracket Assembling



Printhead Bracket Assembling

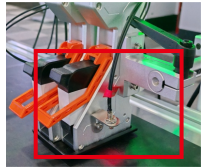


Optical Sensor-Sync Wheel Module Assembling

Optical Fiber Sensor Assembling

Optical sensor fixer installation

Flexible Tube Installation

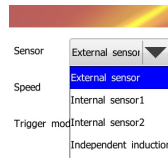


Option 1



Option 2

Printing Setting

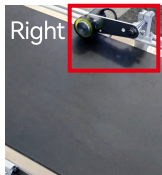


- 1.The distance between optical sensor and print objects needs to be 10mm-50mm.
- 2.You could use either Sensor Fixer or Flexible Tube to support the optical fiber sensor based on actual needs.
- 3.When external sensor is installed, please do remember to set the sensor as External Sensor in the printing setting.

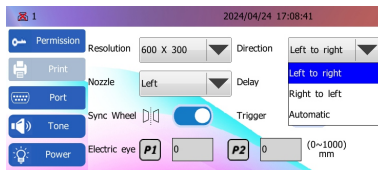
Sync Wheel Assembling



Left

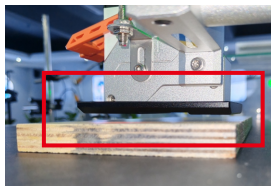


Right



- 1.The synchronous wheel must be in close contact with the belt.
- 2.Please reset the printing direction at the Printing Setting interface if printout is misaligned.
- 3.If no sync wheel installed, disable it at the printing set interface.

Adjustment of distance between print head and print objects

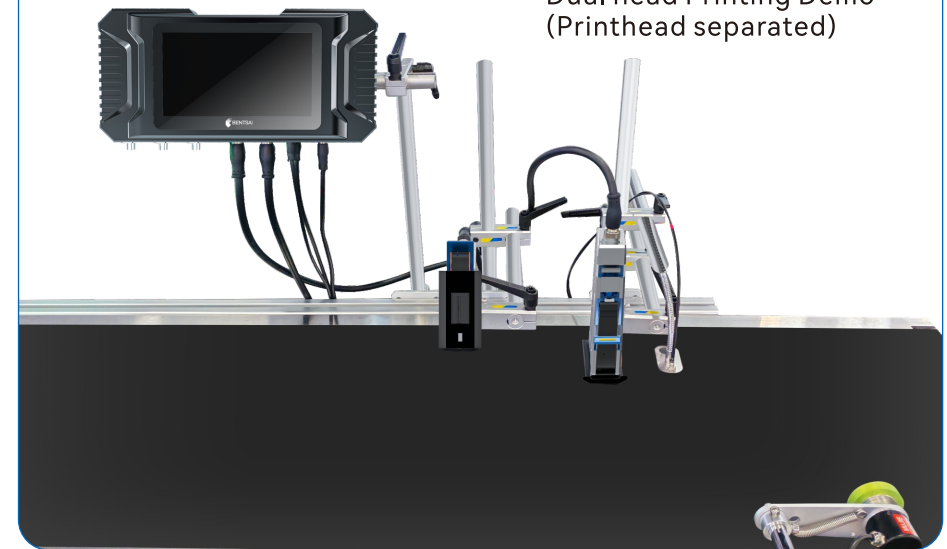


Printhead anti-shock panel needs to be parallel with the print object.

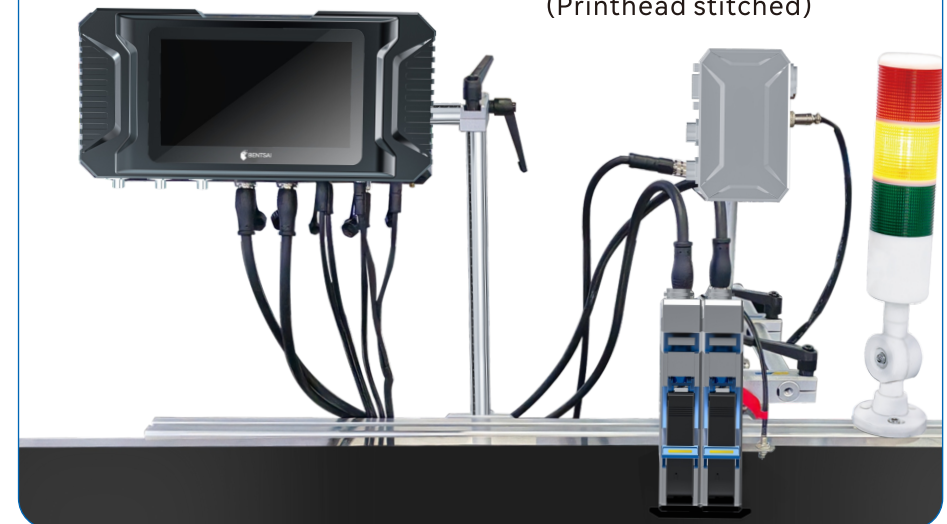
The required distance between printhead nozzles to print Object (ink throw distance) is 2-5mm.

Single-head/Dual-Heads Printer Installation Reference

Dual head Printing Demo (Printhead separated)



Dual head Printing Demo (Printhead stitched)



Important Notice

1. Do not plug or unplug the cables while the machine is powered on.
2. For best printing quality, use the recommended ink cartridge and parts.
Non-recommended products may cause machine issues and void the warranty.
3. Equipment malfunctions caused by failure to follow the instructions in this manual are not covered under warranty.

Safety Instruction

1. Do not attempt to maintain or disassemble the printer without proper training and authorization to avoid accidents due to high voltage inside the machine.
2. Do not store ink cartridge in direct sunlight or high temperatures (exceeding 35°C) as it may affect the printing quality and shelf life of the ink.
3. If ink accidentally splashes into eyes or on skin during use, immediately rinse with clean water and seek medical attention promptly.

Cartridge Maintenance Instructions

1. For unopened ink cartridges, keep them in their original sealed packaging until ready to use. Once opened, ink will slowly evaporate. Stored in original packaging can last longer.
2. Once opened, use the ink cartridge promptly to prevent nozzle clogging.
Different inks have varying characteristics and maintenance requirements.
For more information, contact our after-sales service.
3. After opening, store the partially used ink cartridge in a sealed container with our provided cartridge clip at room temperature. Do not seal with tape or store in a soft plastic bag.
4. The cartridge nozzle surface is very delicate, so avoid touching or wiping it with hard or rough objects to prevent scratching.
5. Use the non-woven cloth to wipe the nozzles.
Wipe vertically along the two rows of nozzles, and avoid wiping horizontally to prevent damage.
6. To prevent poor printing quality caused by air bubbles, refrain from shaking the ink cartridge or exposing it to a vibrating environment.
7. For the best print quality, please contact our after-sales service for detailed instructions and maintenance tips based on the specific type of the inks.

Warranty Instructions

Dear customer

Thank you for purchasing Industrial Inkjet Printers! To ensure the safe use of the product and your benefits and interests, please read the following content carefully, fill in and properly keep the warranty card. This product is a precision instrument. In case of any abnormality, refer to this manual for troubleshooting or contact the customer service center of your seller.

Term of service

1. This product is with a one-year warranty period. The starting date of the warranty period is subject to the date of the product invoice.
2. During the warranty period, if the product is under normal use and maintenance and failure is caused by the quality of the machine itself, the company will provide free repair and replacement parts.
3. Vulnerable parts are excluded, such as ink cartridges, screens, removable storage, switches, chargers, batteries, which shall not be covered by the warranty.

Disclaimer

Any of the following conditions shall not be covered by the warranty:

1. Damage due to improper transportation, use, storage, and maintenance, or man-made damage.
2. Unauthorized repair or the user installs, disassembles, and repairs the machine by himself.
3. Damages caused by using non-genuine consumables or accessories which are not provided by the company.
4. Missed or modified warranty card.
5. Beyond the warranty period.
6. Damage caused by force majeure.

Warranty Card

Product related information

Customer name: _____ Contact phone: _____

Mailing address: _____

Product model: _____ Product ID: _____

Store purchased: _____ Purchase date: _____

Maintenance store: _____ Invoice No.: _____

Maintenance record

Date of maintenance: _____

Failure description: _____

Solution: _____

Maintained by: _____ Contact phone: _____ Staff signature: _____

Fill in this warranty card in time after purchasing this printer.

Please keep the warranty card properly, and it is not required to send it back to the seller.

Carry the warranty card and the original invoice for maintenance.